

User Manual Of Diode Laser Machine



catalogue

Part 1 Introduction.....	1
Note: You must read this manual carefully before using this machine or maintenance personnel.....	2
1.1 Machine introduction.....	2
The operation and control part of the machine is located inside the host, and the built-in integrated microcontroller continuously monitors the operation of the equipment.....	2
1.2 main application.....	2
1.4 Adjustable parameters.....	2
1.5 Electrical Safety.....	2
1.6 Transport safety.....	3
1.9 Product advantages.....	6
1.10 Installation.....	6
Part 2System introduction and operation.....	8
2.1 preparation.....	8
2.2 Operation interface.....	8
Part 3Debugging and maintenance.....	15
3.1 failure &debugging.....	15
3.2 specification.....	17
3.3 relevant requirements.....	17
Contact Us.....	错误！未定义书签。

Part 1 Introduction

Thank you for purchasing the double handles diode laser Machine. This product is an upgraded version of the previous generation. Our machines are known for their excellent quality and outstanding performance. I believe that after purchasing this machine, it will bring you huge profits and more customers. This part is an overall introduction to the double

handles diode laser Machine.

Note: You must read this manual carefully before using this machine or maintenance personnel.

1.1 Machine introduction

The operation and control part of the machine is located inside the host, and the built-in integrated micro-controller continuously monitors the operation of the equipment.

1.2 main application

Whole body's unwanted hair removal:

1. arm hair removal
2. leg hair removal
3. armpit hair removal
4. lip hair removal
5. bikini line hair removal

1.3 Contraindication

- Pregnant woman
- Patients has heart bypass surgery
- Patients with heart disease
- Patients with Hypertensio

1.4 Adjustable parameters

User adjustable parameters are as follows:

Energy level: 1-120 J/CM²

Pulse Width: 1-400ms

Frequency: 1-10Hz

1.5 Electrical Safety

In order to ensure the safety of users, the device strictly implements the national standard GB9706.1-2007. The operating system voltage is 220V, the maximum input current is 10A or the

voltage is 110V, and the maximum input current is 15A. This machine is equipped with automatic leakage protection, when leakage occurs, the machine will automatically cut off the protection system.

The closed state is as follows:



Pull the button up (as shown in the figure below), the machine will work again.



Note: The operating system is equipped with a power cord of the corresponding national standard. Please use a power socket with a protective grounding wire and ensure a safe grounding.

1.6 Transport safety

There are precision parts inside the instrument, so long-distance transportation is not recommended. The buffer packaging provided by the original manufacturer must be used for transportation. Otherwise it will affect the normal use of the machine.

1.7 Optical safety

- The light emitted from this operation system is with wavelength of 808nm, can create safety hazard. All personnel including clients in the treatment room must wear protective glasses whenever the unit is in use
- Diode laser semiconductor light emission presents an eye hazard. Take all necessary precautions in areas where the system is being used.
- Never permit reflective objects such as jewelry, mirrors and watches to reflect the intense pulse light.
- Never look directly at the light emitted from the treatment handle, even when wearing the protective glasses.
- Never direct the intense pulse light at any skin except the test patch and the target area

1.7 warning

- Allow access to the treatment room only to those essential to the procedure and well trained in the required safety procedures.
- Make sure that all treatment room staffs are familiar with the system's control and know how to shut down the system instantly.
- Clear identify that no igniting combustible materials present in and around the treatment area.
- Make sure the caution signs are posted in a prominent place of the treatment room.

1.8 Equipment composition



figure 1 front view

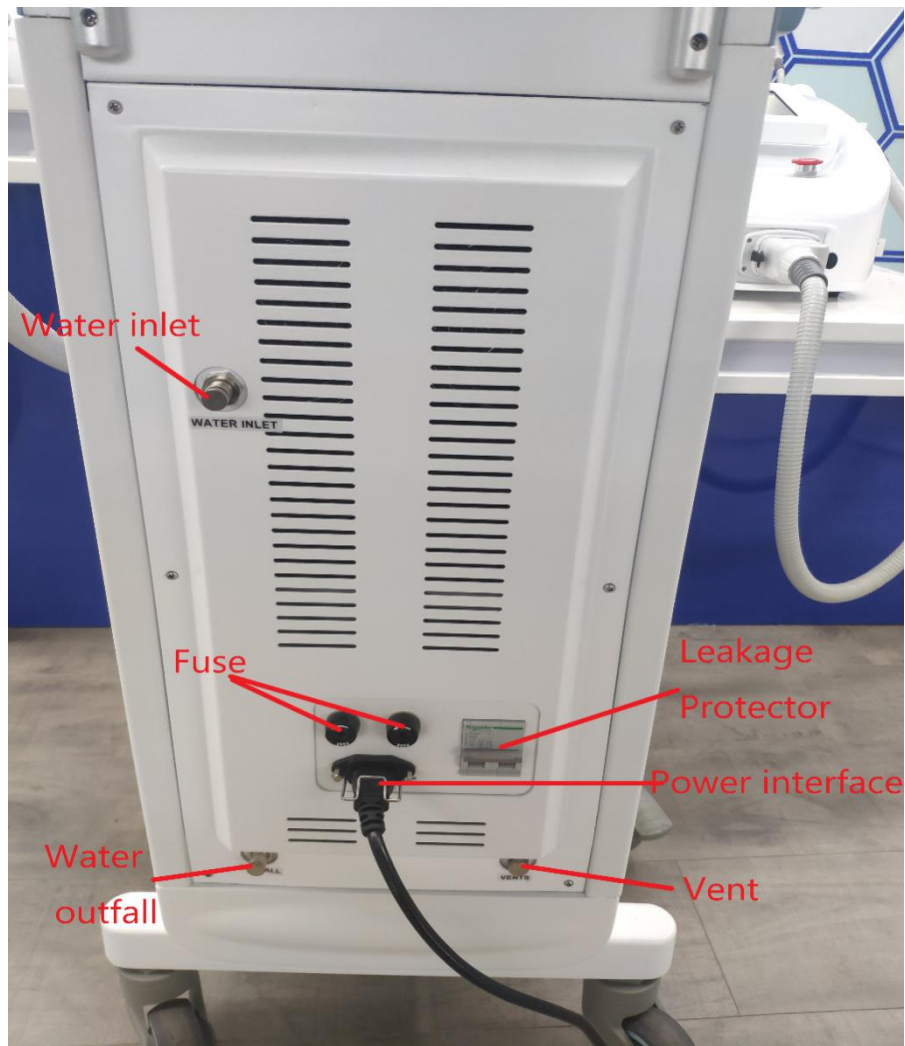


figure 2 Rear view

1.9 Product advantages

1. No surgery, no anesthesia.
2. No trauma, no risk of infection, completely safe.
3. Does not affect normal work and life.

1.10 Installation

The system can be installed in hospitals, medical clinics and beauty salons without any preparation before installation. When you purchase our company's instruments, you can enjoy free installation and commissioning services provided by our company. The system is installed and debugged by professional technicians authorized by our company. The installation work is as follows:

Familiar with the following installation requirements:

Before unpacking the instrument, check whether the accessories are complete and whether the installation location meets the requirements of this section. Keep away from vents and keep a proper distance from other objects during installation.

The rated voltage of the installation site is preset according to user requirements before the equipment leaves the factory. The corresponding electrical equipment requirements are as follows:

- 220V \pm 10%, 10A 50Hz/ 110v \pm 10% 15A 60Hz
- The equipment is grounded through the power supply sheath. A good grounding is essential for safe operation.
- There can be no sudden changes in the input voltage, the voltage and current suddenly decrease or increase sharply.
- To ensure that the system is in the best condition, the room temperature should be kept at about 20°C, the relative humidity should not exceed 80%, Therefore, the treatment room is best equipped with air conditioning.
- Do not expose the instrument to direct sunlight for a long time, and do not place the instrument near the heater.

Part 2 System introduction and operation

2.1 preparation

2.1.1 Fill water into machine

Unscrew the Water inlet and Vent at back of machine , connect the funnel on Water inlet ,keep filling distilled water in until you see water keep coming out from Vent,at that moment machine is fulfilled with water.Caution:distilled water or demineralized water only,no mineral water!!!

2.1.2.Pull up the breaker at back.

2.2 Operation interface

Turn the key to On position and spin the red emergency stop button to turn on machine,the touch screen is shown in Figure 3



figure 3 Initial interface

After press on **Enter**, the interface is shown in Figure 4.

Note: The system will buffer for a few seconds to the next interface. please wait patiently!

Figure 4 handpiece selection

In this interface we can choose one of the handpiece to work, then



figure 5 skin/gender/body area selection

Next interface



2.3 Operation Procedures

- 1: Shave off the hair
- 2: disinfect the treatment area with Alcohol
- 3: put 0.1mm gel on the treatment area to make the moving smoothly
- 4: turn on the machine, choose the right parameter and make the machine ready to work.
- 5: Skin test

2.4 Parameter setting suggestions

All the parameters below are for reference only, the operator should adjust the parameters according to different customer.

Model 1: pulse treatment

Set frequency 1Hz, The machine will coming with the factory default parameters, the operator can do adjustment according to the customer, Please don't change the frequency, and adjust the energy and pulse width is ok.

Treatment area	Skin type I	Skin type II	Skin type III	Skin type IV	Skin type V

Face	Energy:28-45j/cm2 Pulse width: 100-260ms	Energy:28-43j/cm2 Pulse width: 95-250ms	Energy:26-40j/cm2 Pulse width: 90-240ms	Energy:24-38j/cm2 Pulse width: 50-230ms	Energy:21-35j/cm2 Pulse width: 50-200ms
Arm	Energy:28-52j/cm2 Pulse width: 100-290ms	Energy:28-50j/cm2 Pulse width: 100-280ms	Energy:26-48j/cm2 Pulse width: 90-265ms	Energy:24-45j/cm2 Pulse width: 90-255ms	Energy:21-40j/cm2 Pulse width: 80-225ms
Under arm	Energy:32-55J/cm2 Pulse width: 128-298ms	Energy:32-52J/cm2 Pulse width: 128-298ms	Energy:28-50J/cm2 Pulse width: 110-275ms	Energy:26-48J/cm2 Pulse width: 100-260ms	Energy:21-40J/cm2 Pulse width: 80-230ms
Shoulder	Energy:28-52j/cm2 Pulse width: 100-290ms	Energy:28-50j/cm2 Pulse width: 100-285ms	Energy:26-48j/cm2 Pulse width: 90-265ms	Energy:24-45j/cm2 Pulse width: 90-255ms	Energy:21-40j/cm2 Pulse width: 80-225ms
Chest	Energy:28-52j/cm2 Pulse width: 100-290ms	Energy:28-50j/cm2 Pulse width: 100-285ms	Energy:26-48j/cm2 Pulse width: 90-265ms	Energy:24-45j/cm2 Pulse width: 90-255ms	Energy:21-40j/cm2 Pulse width: 80-225ms
Abdomen	Energy:28-52j/cm2 Pulse width: 95-278ms	Energy:28-50j/cm2 Pulse width: 90-270ms	Energy:26-48j/cm2 Pulse width: 90-255ms	Energy:24-45j/cm2 Pulse width: 90-245ms	Energy:21-40/cm2 Pulse width: 90-245ms
Back	Energy:28-52j/cm2 Pulse width: 100-290ms	Energy:28-50j/cm2 Pulse width: 100-285ms	Energy:26-48j/cm2 Pulse width: 90-265ms	Energy:24-45j/cm2 Pulse width: 90-255ms	Energy:21-40j/cm2 Pulse width: 80-225ms
Bikini	Energy:27-55j/cm2 Pulse width: 100-300ms	Energy:27-52j/cm2 Pulse width: 100-300ms	Energy:26-48j/cm2 Pulse width: 90-275ms	Energy:26-45j/cm2 Pulse width: 90-265ms	Energy:21-42j/cm2 Pulse width: 80-225ms
Leg	Energy:28-52j/cm2	Energy:28-50j/cm2	Energy:26-48j/cm2	Energy:24-45j/cm2	Energy:21-40j/cm2

	Pulse width: 100-290ms	Pulse width: 100-285ms	Pulse width: 90-265ms	Pulse width: 90-255ms	Pulse width: 80-225ms
--	---------------------------	---------------------------	--------------------------	--------------------------	--------------------------

Model 2: In motion treatment. In this model, in order to protect the skin, when you increase the frequency, the pulse width will reduce accordingly. (Note: the Max summation of frequency * pulse width is 400)

Suggestion (A)

Set frequency 4HZ, (treatment speed 2cm/s, repetition 3-4 times)

Treatment area	Skin type I	Skin type II	Skin type III	Skin type IV	Skin type V
Face	Energy:28-55j/cm2 Pulse width: 30-80ms	Energy:28-52j/cm2 Pulse width: 30-78ms	Energy:28-50j/cm2 Pulse width: 30-75ms	Energy:28-48j/cm2 Pulse width: 30-70ms	Energy:28-45j/cm2 Pulse width: 30-60ms
Arm	Energy:28-60j/cm2 Pulse width: 30-80ms	Energy:28-58j/cm2 Pulse width: 30-78ms	Energy:28-58j/cm2 Pulse width: 30-75ms	Energy:28-55j/cm2 Pulse width: 30-70ms	Energy:28-50j/cm2 Pulse width: 30-60ms
Shoulder	Energy:28-60j/cm2 Pulse width: 30-80ms	Energy:28-52j/cm2 Pulse width: 30-78ms	Energy:28-58j/cm2 Pulse width: 30-75ms	Energy:28-55j/cm2 Pulse width: 30-70ms	Energy:28-50j/cm2 Pulse width: 30-60ms
Chest	Energy:28-60j/cm2 Pulse width: 30-80ms	Energy:28-58j/cm2 Pulse width: 30-78ms	Energy:28-58j/cm2 Pulse width: 30-75ms	Energy:28-55j/cm2 Pulse width: 30-70ms	Energy:28-50j/cm2 Pulse width: 30-60ms
Abdomen	Energy:28-60j/cm2 Pulse width: 30-80ms	Energy:28-58j/cm2 Pulse width: 30-78ms	Energy:28-58j/cm2 Pulse width: 30-75ms	Energy:28-55j/cm2 Pulse width: 30-70ms	Energy:28-50j/cm2 Pulse width: 30-60ms
Back	Energy:28-	Energy:28-	Energy:28-	Energy:28-	Energy:28-

	60j/cm2 Pulse width: 30-78ms	58j/cm2 Pulse width: 30-78ms	58j/cm2 Pulse width: 30-75ms	55j/cm2 Pulse width: 30-70ms	50j/cm2 Pulse width: 30-60ms
Bikini	Energy:28-60j/cm2 Pulse width: 30-80ms	Energy:28-58j/cm2 Pulse width: 30-78ms	Energy:28-58j/cm2 Pulse width: 30-75ms	Energy:28-55j/cm2 Pulse width: 30-70ms	Energy:28-50j/cm2 Pulse width: 30-60ms
Leg	Energy:28-60j/cm2 Pulse width: 30-80ms	Energy:28-58j/cm2 Pulse width: 30-78ms	Energy:28-58j/cm2 Pulse width: 30-75ms	Energy:28-55j/cm2 Pulse width: 30-70ms	Energy:28-50j/cm2 Pulse width: 30-60ms

Suggestion (B)

Set frequency 6HZ, (treatment speed 3cm/s, repetition 4-5 times)

Treatment area	Skin type I	Skin type II	Skin type III	Skin type IV	Skin type V
Face	Energy:28-55j/cm2 Pulse width: 23-56ms	Energy:28-52j/cm2 Pulse width: 23-56ms	Energy:28-50j/cm2 Pulse width: 23-56ms	Energy:28-48j/cm2 Pulse width: 23-56ms	Energy:28-45j/cm2 Pulse width: 23-56ms
Arm	Energy:28-60j/cm2 Pulse width: 23-56ms	Energy:28-58j/cm2 Pulse width: 23-56ms	Energy:28-58j/cm2 Pulse width: 23-56ms	Energy:28-55j/cm2 Pulse width: 23-56ms	Energy:28-50j/cm2 Pulse width: 23-56ms
Shoulder	Energy:28-60j/cm2 Pulse width: 23-56ms	Energy:28-52j/cm2 Pulse width: 23-56ms	Energy:28-58j/cm2 Pulse width: 30-75ms	Energy:28-55j/cm2 Pulse width: 23-56ms	Energy:28-50j/cm2 Pulse width: 23-56ms
Chest	Energy:28-60j/cm2 Pulse width: 23-56ms	Energy:28-58j/cm2 Pulse width: 23-56ms	Energy:28-58j/cm2 Pulse width: 23-56ms	Energy:28-55j/cm2 Pulse width: 23-56ms	Energy:28-50j/cm2 Pulse width: 23-56ms
Abdomen	Energy:28-	Energy:28-	Energy:28-	Energy:28-	Energy:28-

	60j/cm2 Pulse width: 23-56ms	58j/cm2 Pulse width: 23-56ms	58j/cm2 Pulse width: 23-56ms	55j/cm2 Pulse width: 23-56ms	50j/cm2 Pulse width: 23-56ms
Back	Energy:28- 60j/cm2 Pulse width: 23-56ms	Energy:28- 58j/cm2 Pulse width: 23-56ms	Energy:28- 58j/cm2 Pulse width: 23-56ms	Energy:28- 55j/cm2 Pulse width: 23-56ms	Energy:28- 50j/cm2 Pulse width: 23-56ms
Bikini	Energy:28- 60j/cm2 Pulse width: 23-56ms	Energy:28- 58j/cm2 Pulse width: 23-56ms	Energy:28- 58j/cm2 Pulse width: 23-56ms	Energy:28- 55j/cm2 Pulse width: 23-56ms	Energy:28- 50j/cm2 Pulse width: 23-56ms
Leg	Energy:28- 60j/cm2 Pulse width: 23-56ms	Energy:28- 58j/cm2 Pulse width: 23-56ms	Energy:28- 58j/cm2 Pulse width: 23-56ms	Energy:28- 55j/cm2 Pulse width: 23-56ms	Energy:28- 50j/cm2 Pulse width: 23-56ms

2.5 Therapy sessions:

1.According to the difference of the hair cycle and treat area, we suggest that 28 days as one session. Normally it need 4-6 sessions.

2.Patient can provide feedback after one month of the treatment finished. If necessary, continue to next treatment to gain the ideal results.

2.6 Attention

Must protect the patient's eyes during the treatment.

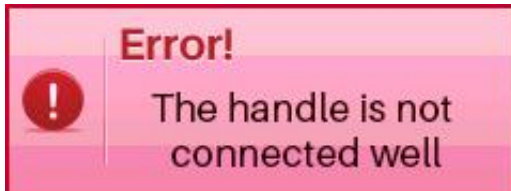
Treated area is over 40cm2 is not suggested. If the treated area is larger, pls divide into several areas and treat more times.

When having the treatment, It needs to lightly touch the treat area. Don't press the treatment area.

Part 3 Debugging and maintenance

3.1 failure & debugging

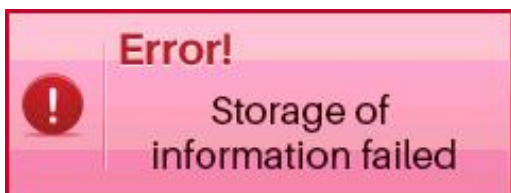
3.1.1



Debugging: re-plug the handles, make sure you twist knob to certain position .



3.1.2



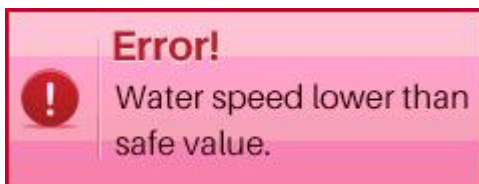
Debugging: re-plug the handle.

3.1.3

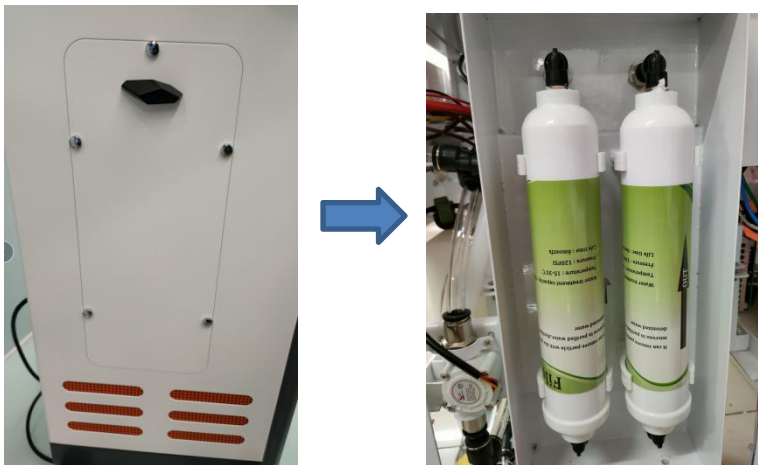


Debugging: turn on air conditioning to maintain room temperature 23 degree Celsius, fill 500ml cool water into machine if needed.

3.1.4



Debugging: change water filters first, if not help, contact after-sale service.

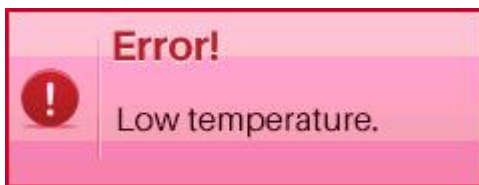


3.1.5



Debugging: temperature sensor is detached or broken.

3.1.6



Debugging:keep machine on for 10 minutes ,warm up the water inside or fill 500ml warm water into machine.

3.2 specification

Screen	10.4 inch touch color screen
Handle number	2 heads available
Freeze temperature	-8 in level 5
Cooling system	Wind cooling + water cooling+ semiconductor cooling
input power	2800W
Output power	1200W
Fuse specification	Ø5×25 15A
Power supply	AC220V±10%,10A;50Hz;AC110V±10%15A,60Hz

3.3 relevant requirements

The system running environment requirements:

Environment temperature: 10℃~30℃

Relative humidity: less than 80%

The system storage environmental requirement:

Environment temperature:0℃~40℃

3.5 After-sales service

- Two-Year Quality Assurance Limited Warranty For Any Nubway® Product From The Original Product Purchase Date.
- We Offer Online Professional Guidelines And Technical Support For Troubleshooting

By English-spoken After-sales Engineer Via Skype or Phone call.

- Components Exchange Service Free Of Charge Under The Standard Warranty(